

Ball Bearing chain type Installation Manual (Straight pole)

Momeasy

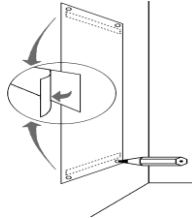
Component list

Moving parts	Installation materials
Non-moving part	Marking paper
Pole 4 ea	Wedge Anchor 4 set
Optional parts - hook	MUST use more than 5/16" Anchor to maintain of SWL

DO NOT use screw

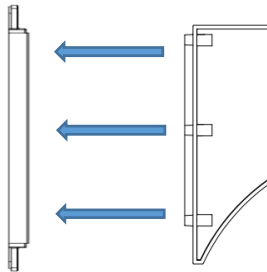
1. Secure the place of installation and position of Anchor hole

Both side tape placed anchor hold
remove marking papare
Anchor hold : 870x230mm



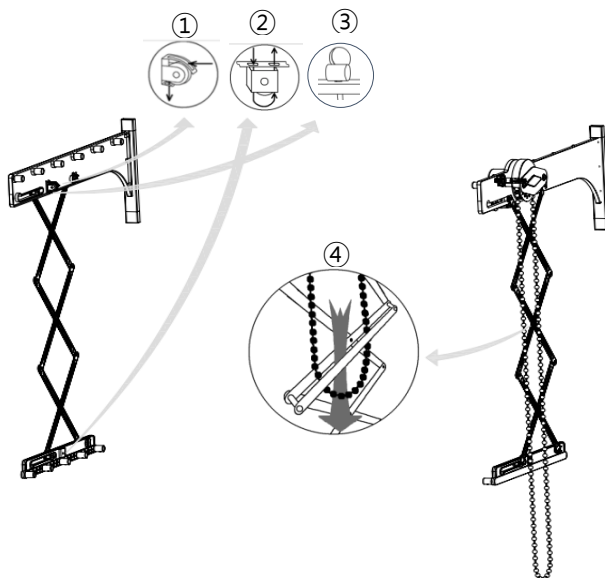
3. Placed and mounted Products

- Place the product into bolts and tight with nuts Adjust moving-parts and non-moving-parts
- right position and detained with nuts

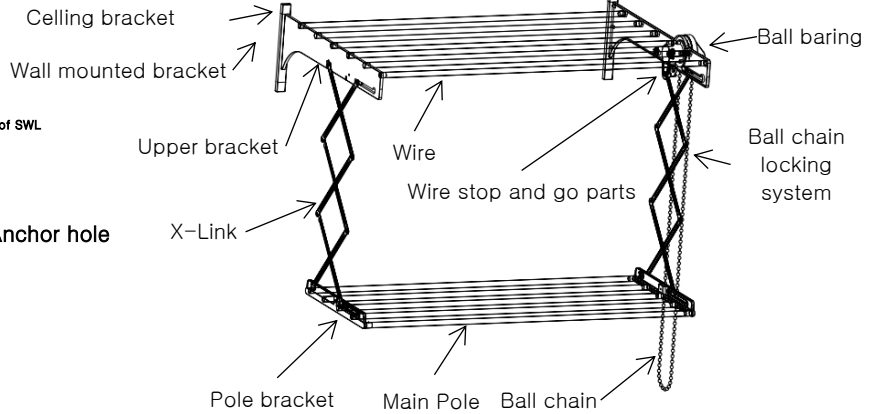


5. X-Link Down

Remove tie and down by hand carefully



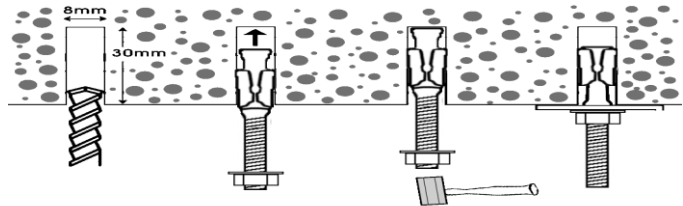
Non-moving-parts Descriptions Moving-parts



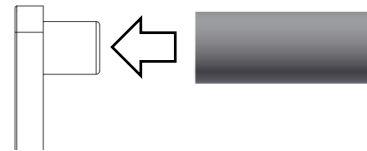
2. Make the anchor hole and detain anchor

Marked 4 anchor hole, diameter $\phi 8$, depth 30 mm
*** DO NOT over depth more than 40mm**

Caution : Mounted electronic cord and waterproof might broken.

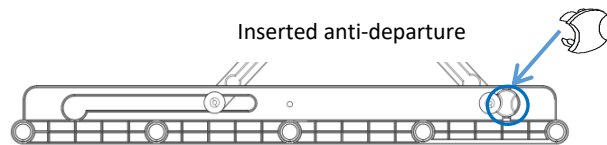


4. Pole mounted and options



5 Pole mounted inth moving parts and non-moving parts

Inserted anti-departure



6. Wire adjustment of non-moving parts

- Place the wire from moving-parts to ceiling mounted non-moving-parts
- Place the wire into the pully of pole bracket
- The wire must place into the hole of ceiling mounted bracket with one turning
- Moving parts chain into safety mounted

7. Function test

After function test, check level of pole

Quality control services free of charge

1 year from the date of purchase

주식회사 웰 테 크
www.momeasy.co.kr

Customer Counseling Center : 1600-5470

Weekday : 10:00 ~ 17:00 (Exclude Saturdays, Sundays and holidays)