

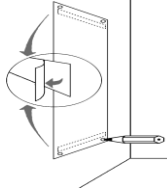
## Component list

Moving parts	Installation materials
Non-moving part	Marking paper
Pole 4 ea	Wedge Anchor 4 set
Optional parts – hook	<b>MUST use more than 5/16" Anchor to maintain of SWL</b>

**DO NOT use screw**

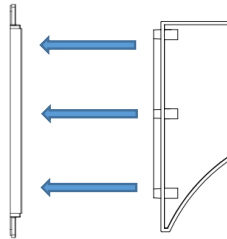
### 1. Secure the place of installation and position of Anchor hole

Both side tape placed anchor hold  
remove marking papare  
Anchor hold : 870x230mm

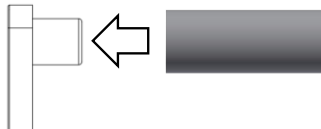


### 3. Placed and mounted Products

- Place the product into bolts and tight with nuts Adjust moving-parts and non-moving-parts
- right position and detained with nuts



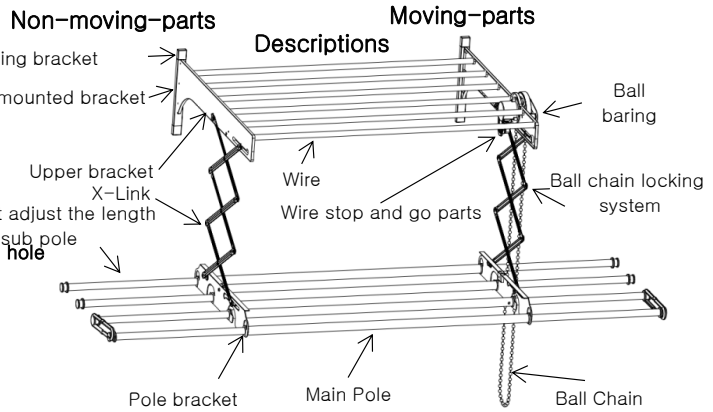
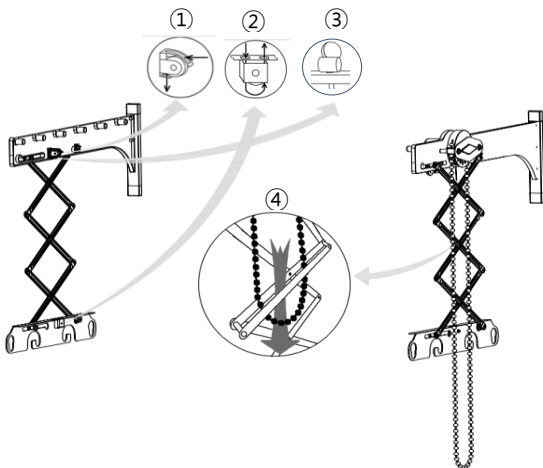
### 4. Pole mounted and options



5 Pole mounted inth moving parts and non-moving parts

### 5. X-Link Down

Remove tie and down by hand carefully

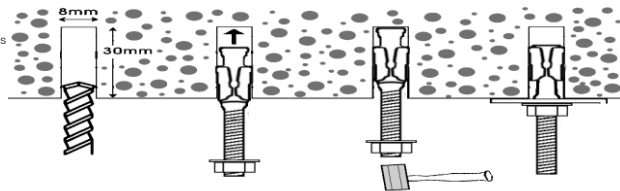


### 2. Make the anchor hole and detain anchor

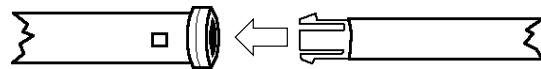
Marked 4 anchor hole, diameter  $\phi 8$ , depth 30 mm

**\* DO NOT over depth more than 40mm**

Caution : Mounted electronic cord and waterproof might broken.

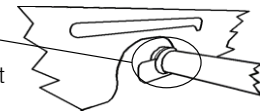


### 6. Poles installation

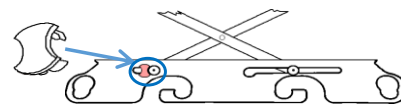


ace 2 sub pole place into 4 main pole

Main pole with sub pole assembled  
4 and placed both side of pole bracket



**※ For safety issue, detained bracket and pole correctly**



Inserted anti-departure

### 7. Wire adjustment of non-moving parts

- Place the wire from moving-parts to ceiling mounted non-moving-parts
- Place the wire into the pully of pole bracket
- The wire must place into the hole of ceiling mounted bracket with one turning
- Moving parts chain into safety mounted

### 8. Function test

After function test, check level of pole